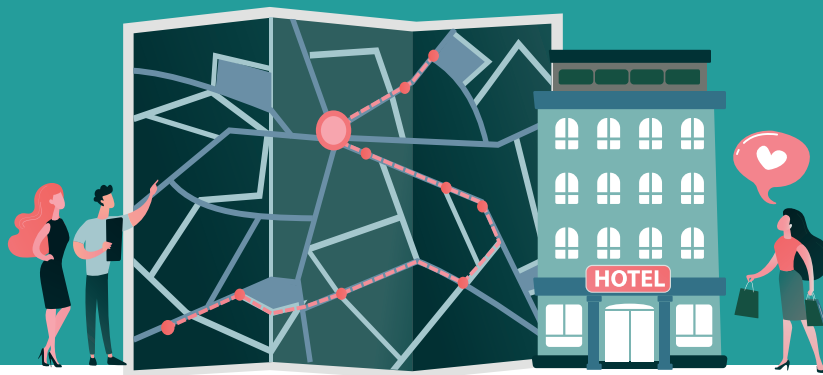


The tax on stays in tourist establishments



What is it?

It is a tax levied by the Generalitat to help offset the negative impact caused by tourist activities in Catalonia.

Check the updated information on rates: atc.gencat.cat/ca/tributs/ieet/quota-tributaria

Who has to pay it?

People staying in an establishment located in Catalonia and those travelling on a cruise ship that stops in a Catalanian port. Payment is made to the establishment or to the cruise company and they declare it to the ATC (Catalan Tax Agency).

People exempt from payment:

- Those aged 16 or under,
- Those staying due to force majeure (relocation due to natural disasters),
- Those staying for health reasons, and their companions, and
- Those doing a subsidized stay by social programs of the European Union.

What's the amount to be paid?

- The amount varies according to the location and category of the tourist establishment. In addition, in the city of Barcelona, a municipal surcharge is added.
- In the case of ship cruises, the rate depends on the amount of hours that the cruise stays in a port.
- To find out the amount that each person must pay, multiply the rate by the number of days of stay, up to a maximum of 7 days.

What is the income used for?

The resources are allocated to projects or actions of the **Fund for the Promotion of Tourism**, with the following objectives:



Tourism promotion in Catalonia



Promotion, creation and improvement of tourist products



Development of infrastructure and tourist services



Improvement of control services for tourist establishments



Promotion of a sustainable and quality tourism and preservation of tourism resources

We work to give you a better service!



Agència Tributària de Catalunya

Generalitat de Catalunya